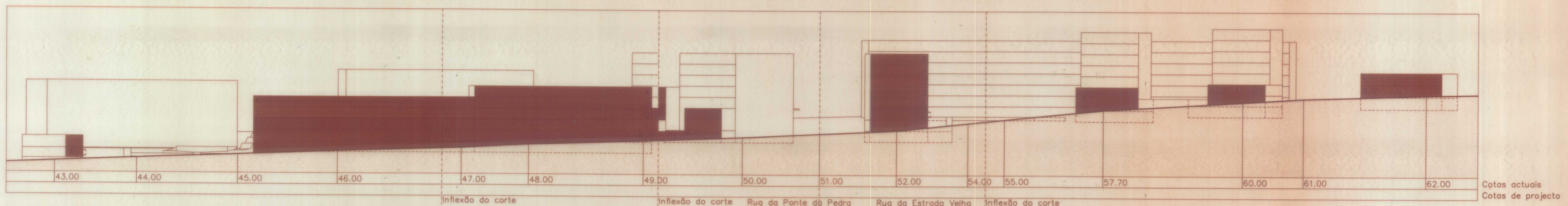
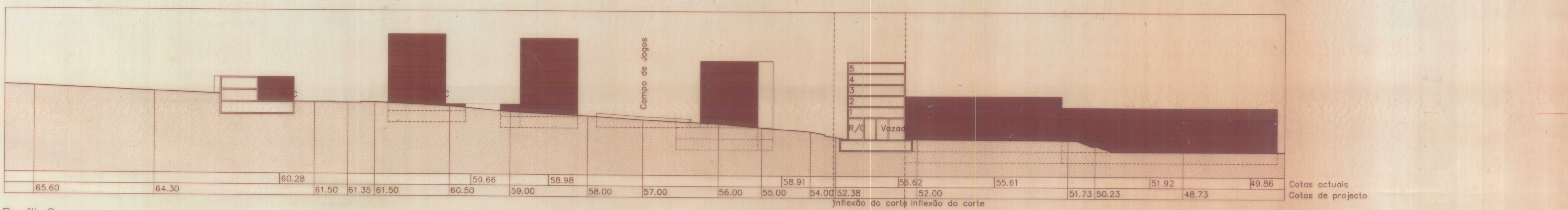


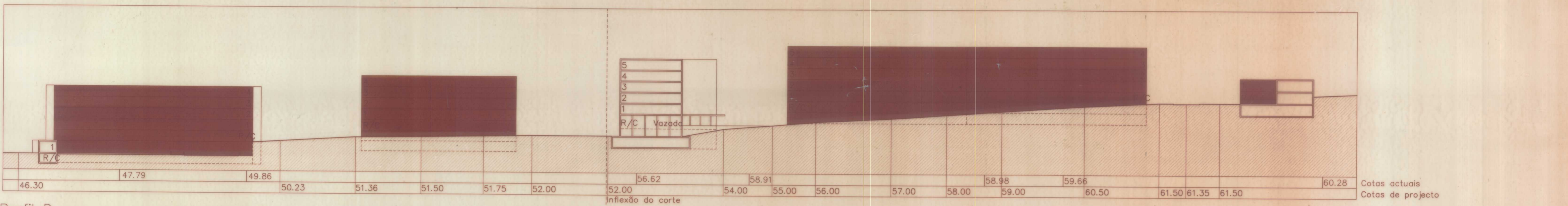
Perfil A (Rua de Santana)



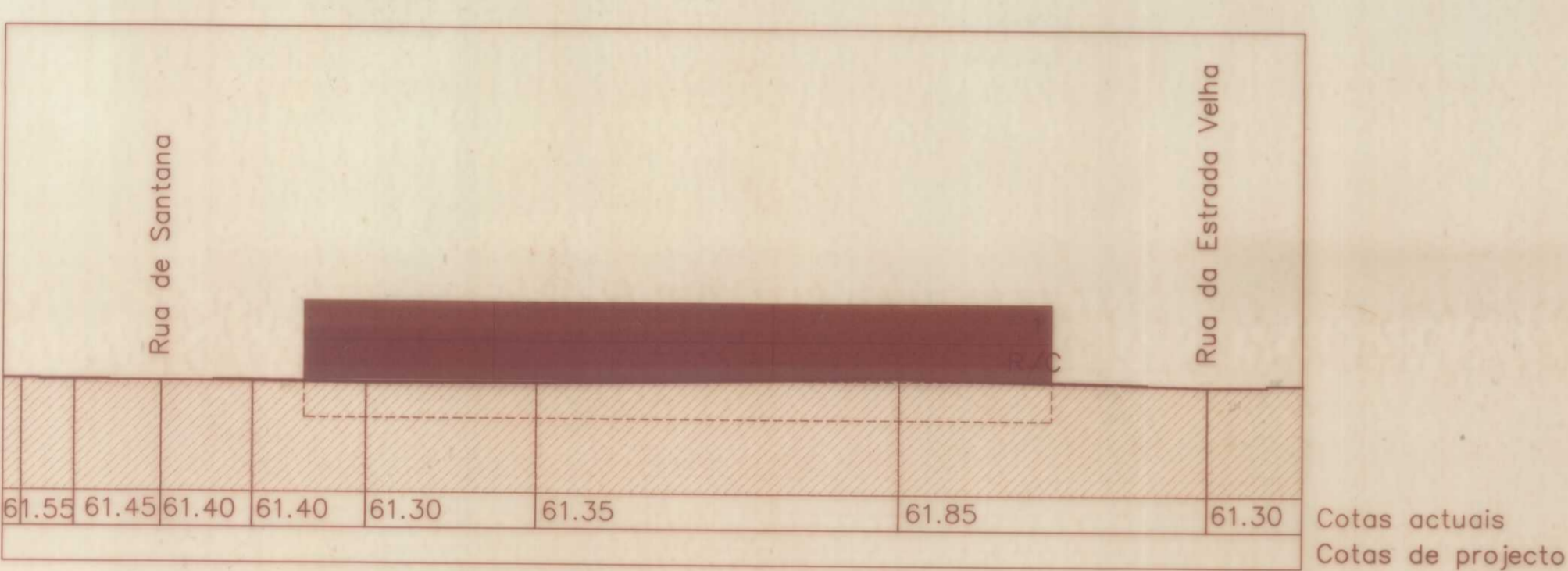
Perfil B (Rua da Ponte da Pedra e Rua da Estrada Velha)



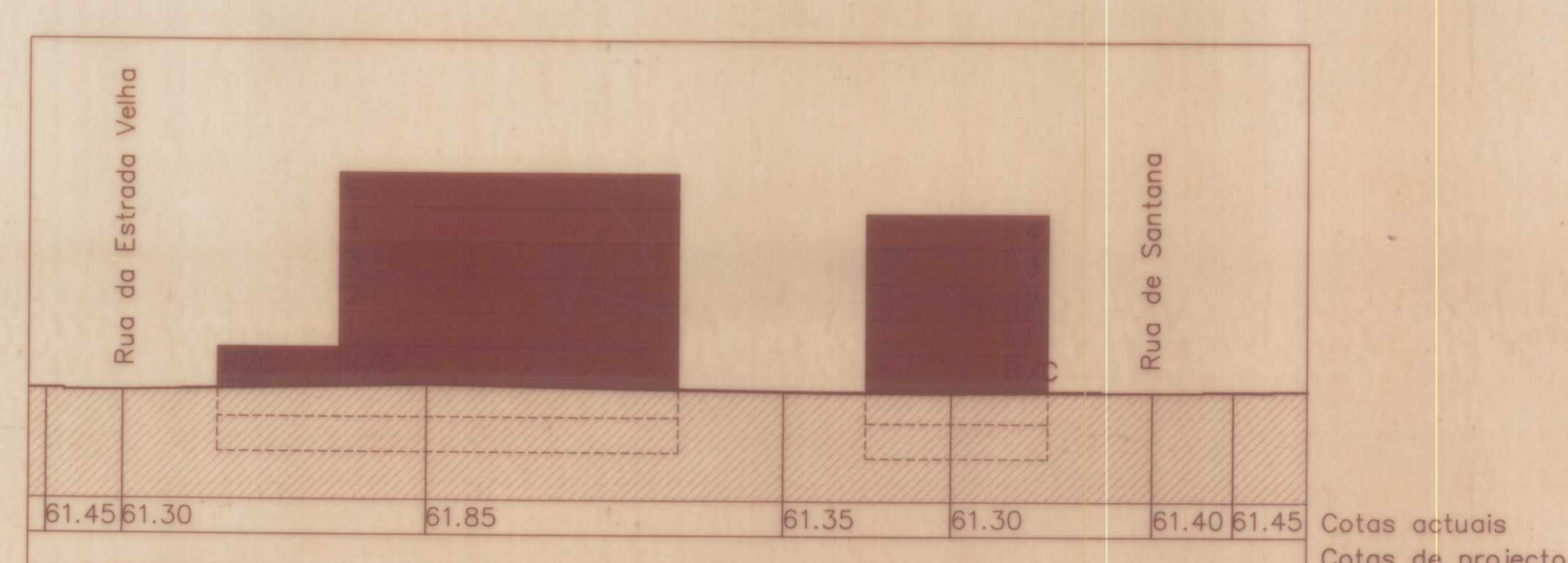
Perfil C



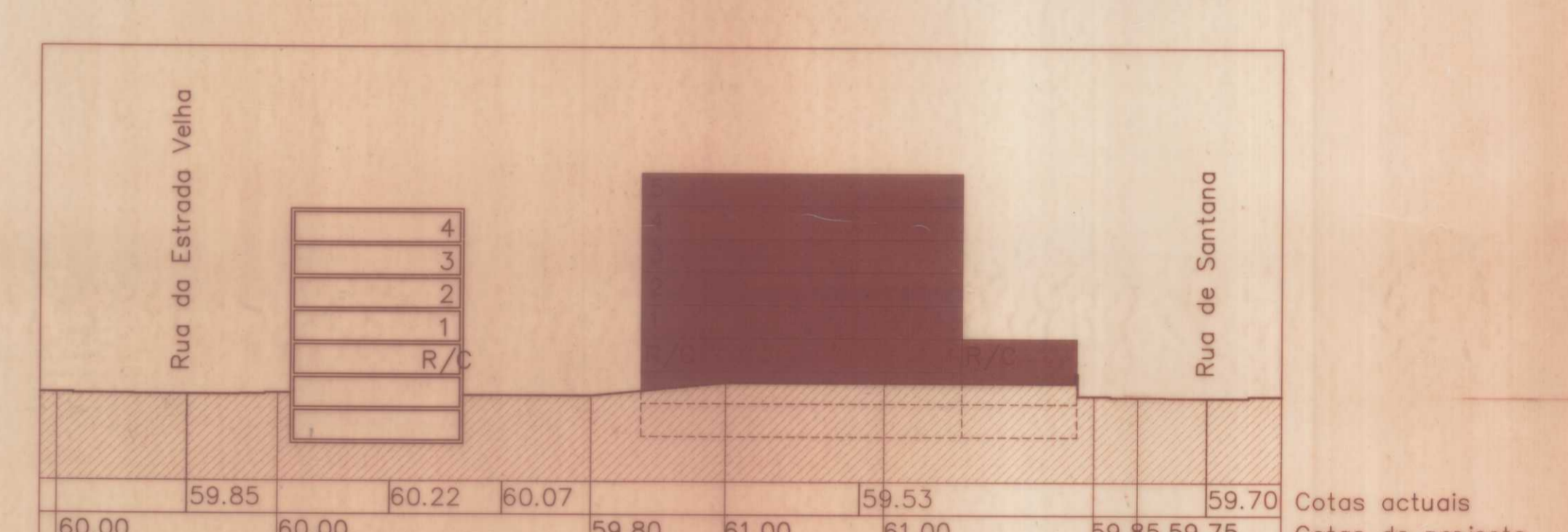
Perfil D



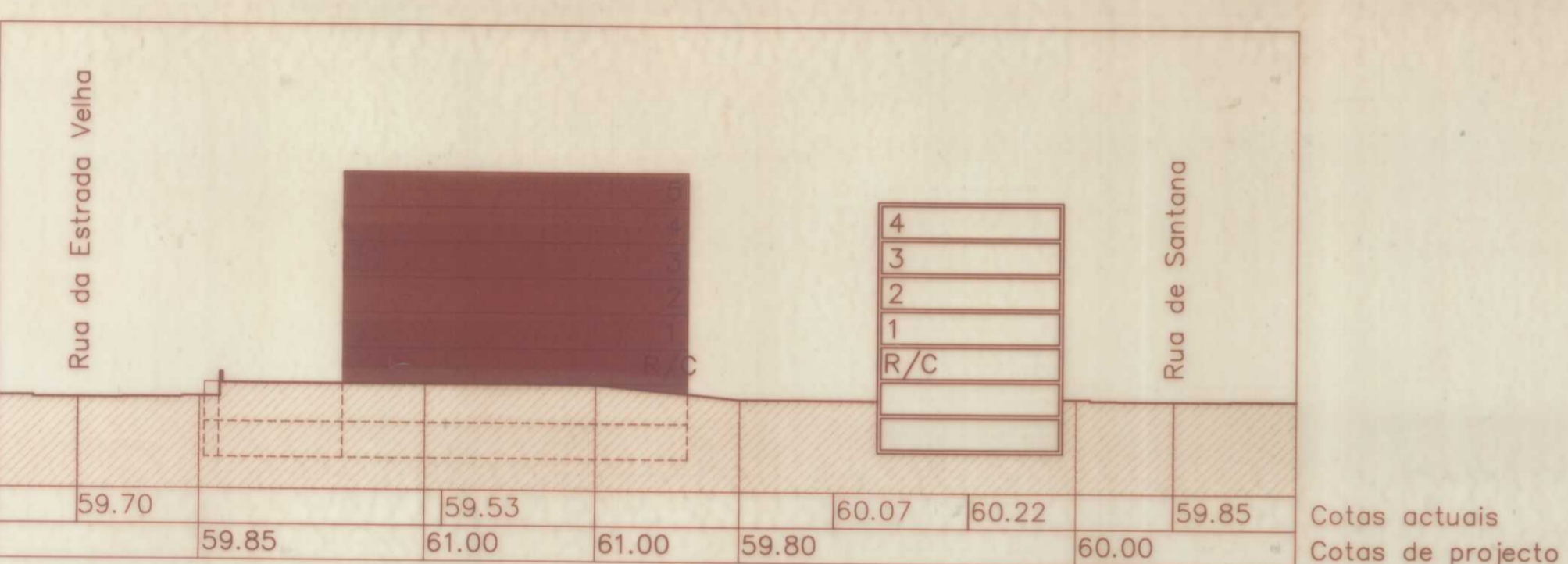
Perfil E



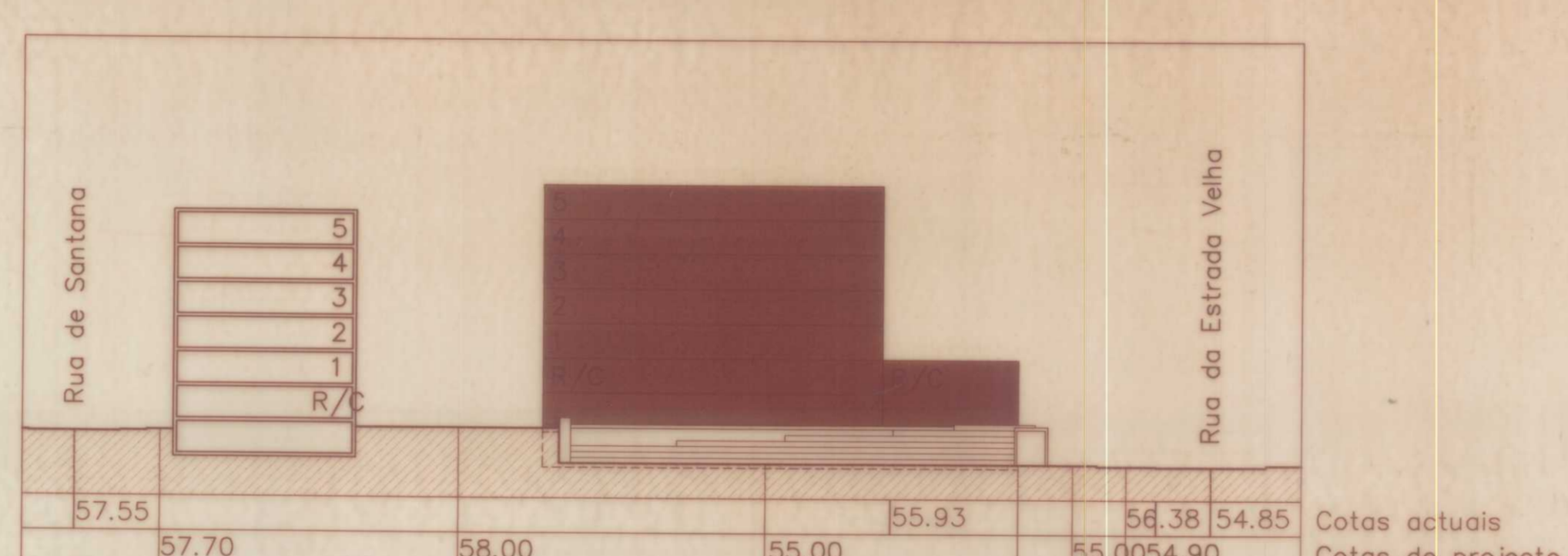
Perfil F



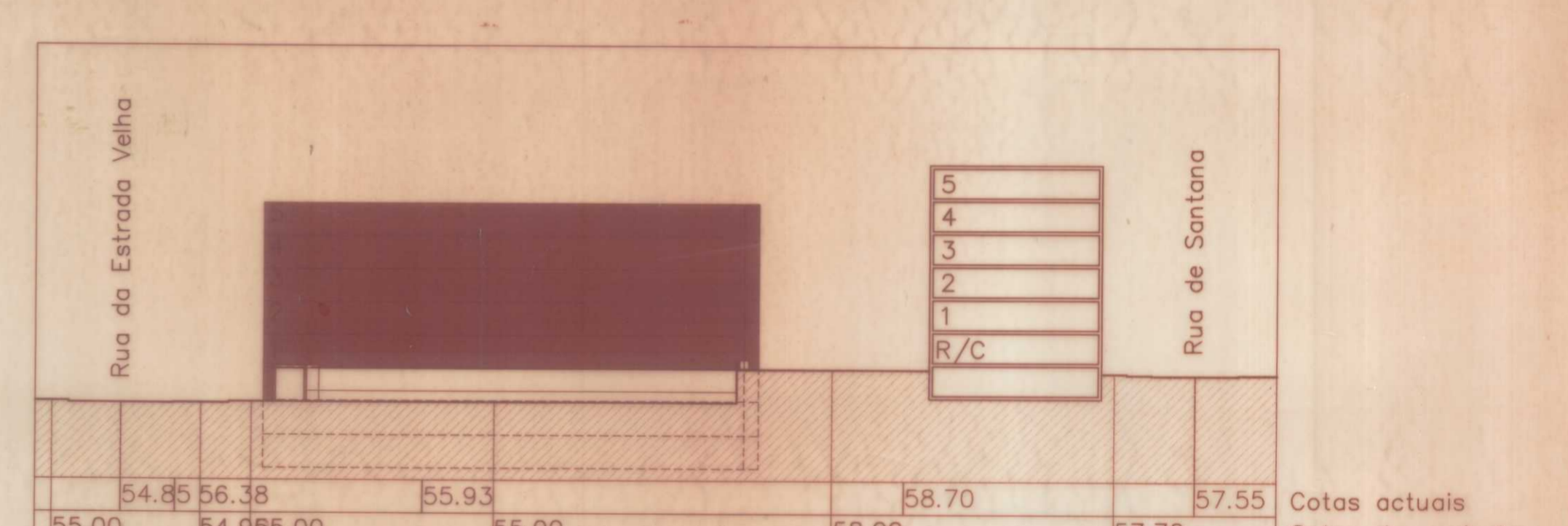
Perfil G



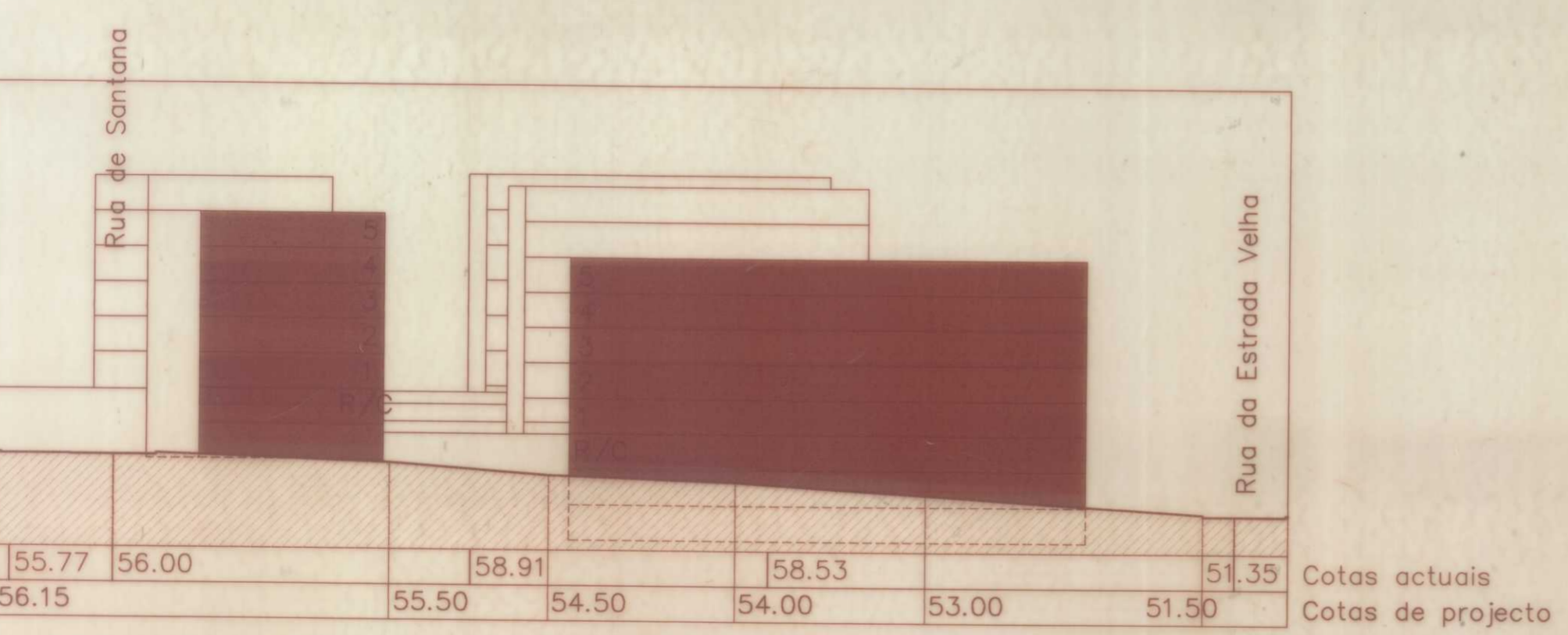
Perfil H



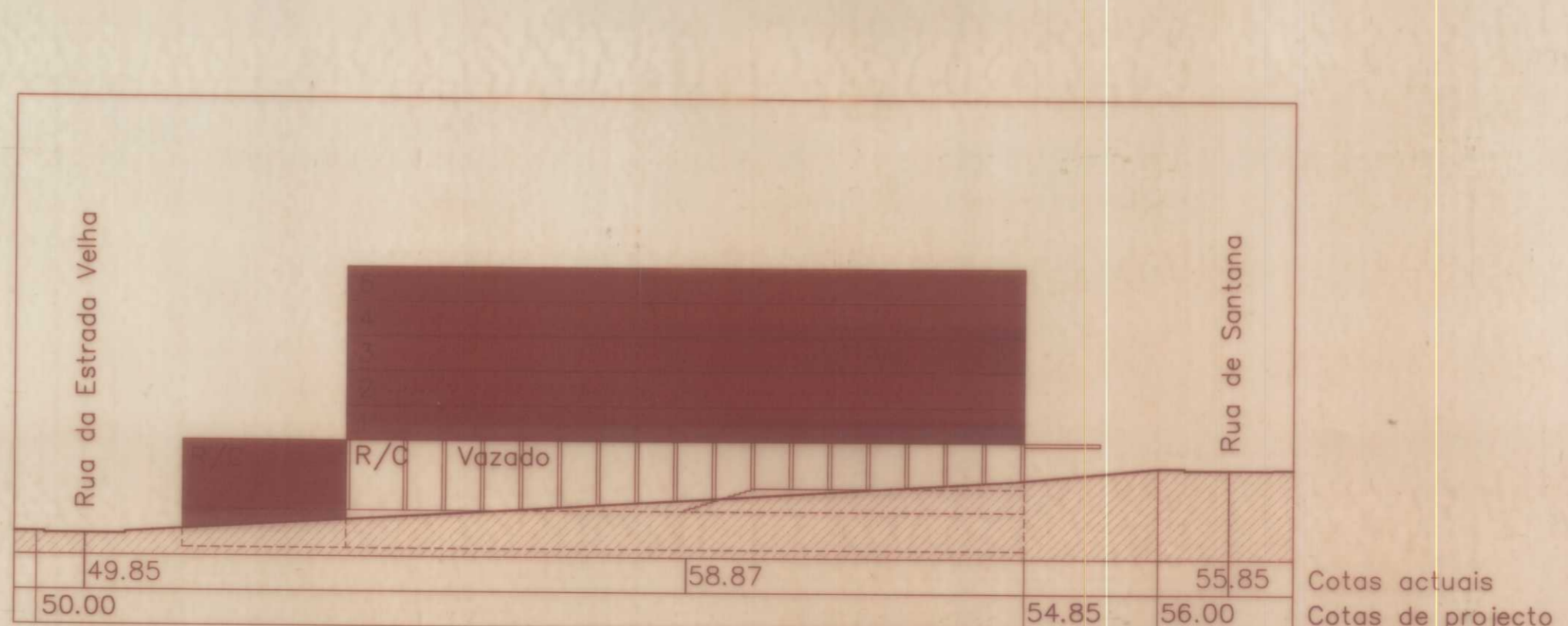
Perfil I



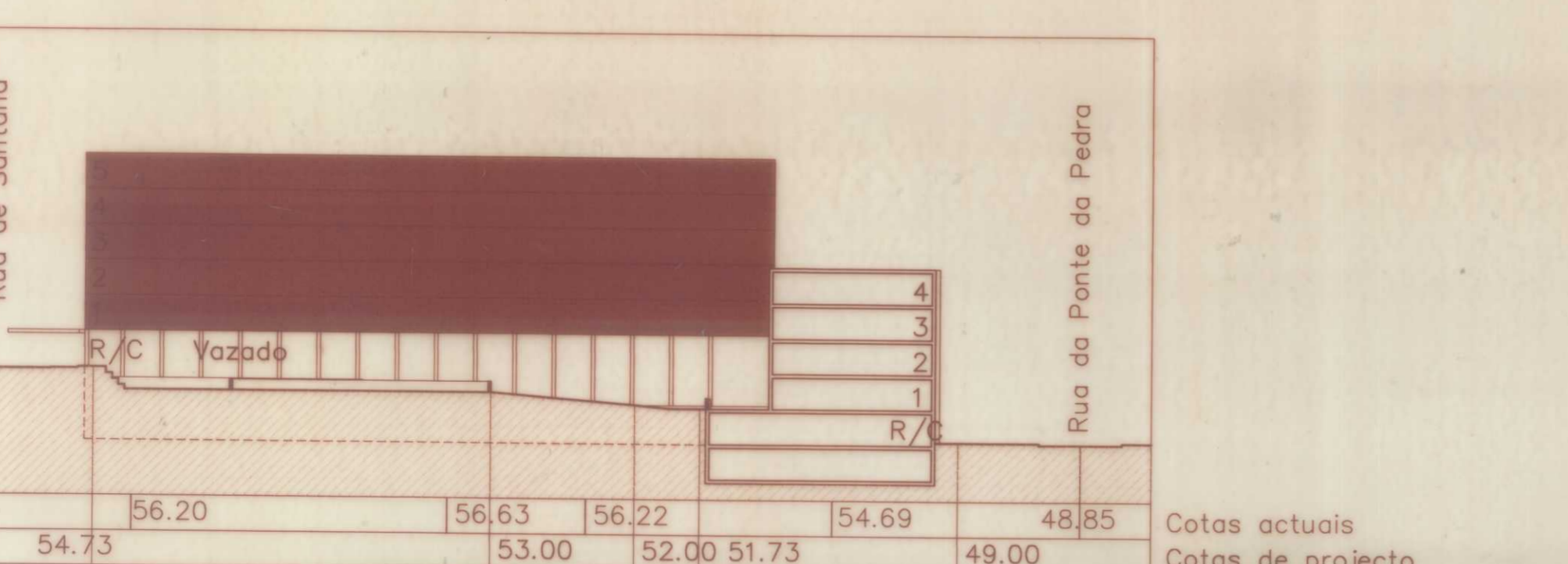
Perfil J



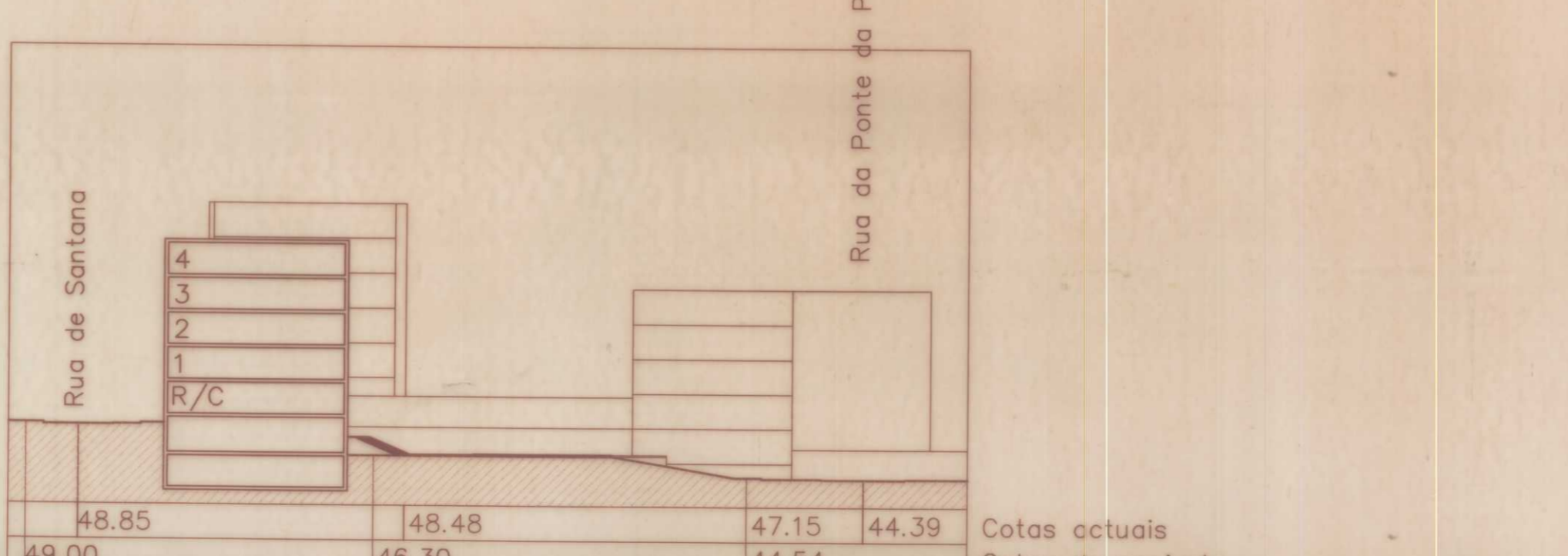
Perfil L



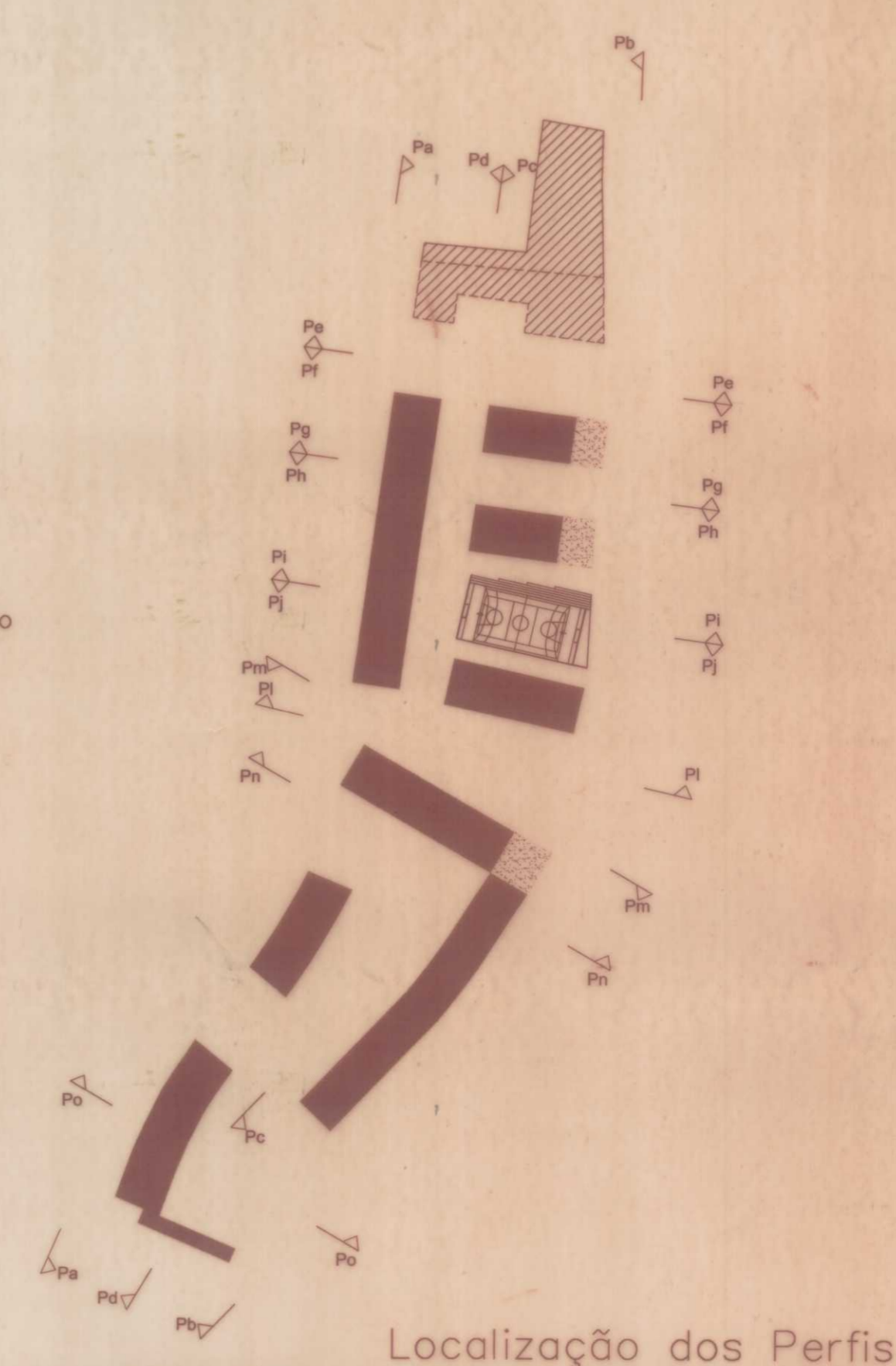
Perfil M



Perfil N



Perfil O



**LEGENDA**

**EDIFÍCIOS PROPOSTOS**

- 1º PLANO
- PLANO POSTERIOR
- ▨ EM CORTE

Ratificado pela Resolução do Conselho de Ministros Nº 35/2003  
Publicado no D.R. de 12 de Março de 2003

MUNICÍPIO DE MATOSINHOS  
Câmara Municipal

Plano de Pormenor de uma zona da Rua de Santana  
Leça do Balio

PERFIS

ESCALA: 1/500

0m 5m 10m 20m

Departamento de Planeamento

8